

UNIQUELY DESIGNED FOR BOTH PROFESSIONS

GRAPHIC ARTS & PRODUCTION

12  COLORS

The 12 & 8-Color Series Large Format Printers

8  COLORS



iPF5100

iPF6410

iPF6460

iPF8410

iPF9410

iPF6300S

iPF8300S

iPF9410S

Business *Can* be simple

INTRODUCING THE 12-COLOR LARGE FORMAT PRINTERS

SUPERB QUALITY PRINTING MODELS



44"

imagePROGRAF iPF8410

Capable of printing on media up to 44" wide, this amazing large format printer delivers high-quality photo and fine art prints. Improved for exceptional quality with smooth gradations and prints at faster speeds than previous model*

*as compared to iPF9100

SIZE	A0	
PAPER	Plain Paper	Heavy Coated Paper
MODE	Fast	Standard
PRINT SPEED	Approx. 1min 58sec	Approx. 3min 39sec

EASE OF USE			
Roll Paper / Cut Sheets Selection	Real-time Status of Plotter	High Capacity in Harddisk Drive	Gigabit Ethernet / USB HI Speed Connection
SPECIFICATIONS			
↗ LUCIA EX Pigment Ink	↗ Max Resolution 2400 x 1200 DPI	↗ 330ml / 700ml Ink Tank	↗ 250GB HDD
↗ Standard Memory 384MB	↗ Roll Paper: ISO A0-A3 / 10"-44"	↗ Cut Sheets: ISO A0-A4, B0-B4 / DIN C0-C4	



17"

imagePROGRAF iPF5100



Designed for maximum productivity and consistent high quality results, this 17" large format printer is built to speedily produce brilliant photographic prints, proofs, and fine art reproductions.

SIZE	A2		
PAPER	Plain Paper (Cassette Tray)	Plain Paper	Heavy Coated Paper
MODE	Draft	Standard	Standard
PRINT SPEED	Approx. 35sec	Approx. 1min 13sec	Approx. 1min 14sec
EASE OF USE			
Roll Paper / Cassette Tray for 250 sheets	Optional Printer Stand	Ethernet / USB HI Speed Connection	

SPECIFICATIONS			
↗ LUCIA Pigment Ink	↗ Max Resolution 2400 x 1200 DPI	↗ 130ml Ink Tank	↗ Standard Memory 192MB
↗ Roll Paper: ISO A2/A3/B4/8"-17"	↗ Cut Sheets: ISO A2-A4 / B3-B4 / 8"-17"		

24"

imagePROGRAF iPF6410 iPF6460



These 24" large format solutions are perfect for proofing, photography, and fine art prints. The iPF6460 printer is further equipped with a built-in 250GB hard drive, and has the optional addition of the Spectrophotometer, for advanced color management, including the ability to maintain color consistency across multiple iPFX410 printers.

SIZE	A1		
PAPER	Plain Paper	Heavy Coated Paper	
MODE	Fast	Standard	
PRINT SPEED	Approx. 1min 8sec	Approx. 2min 7sec	
EASE OF USE			
Roll Paper / Cut Sheets Selection	Real-time Status of Plotter	High Capacity in Harddisk Drive	Gigabit Ethernet / USB HI Speed Connection

SPECIFICATIONS			
↗ LUCIA EX Pigment Ink	↗ Max Resolution 2400 x 1200 DPI	↗ 130ml / 300ml Ink Tank	↗ 250GB HDD (iPF6460)
↗ Standard Memory 384MB	↗ Roll Paper: ISO A1-A3 / 8"-17"	↗ Cut Sheets: ISO A1-A4, B2-B4 / DIN C2-C4	

60"

imagePROGRAF iPF9410

A 60" powerhouse printer for incredibly lush images and is ideal for large giclée prints. This large format printer produces up to 60" borderless, and has a media take-up roll for long print runs.

SIZE	A0	
PAPER	Plain Paper	Heavy Coated Paper
MODE	Fast	Standard
PRINT SPEED	Approx. 1min 58sec	Approx. 3min 39sec



EASE OF USE			
Roll Paper / Cut Sheets Selection	Real-time Status of Plotter	High Capacity in Harddisk Drive	Gigabit Ethernet / USB HI Speed Connection
SPECIFICATIONS			
↗ LUCIA EX Pigment Ink	↗ Max Resolution 2400 x 1200 DPI	↗ 330ml / 700ml Ink Tank	↗ 250GB HDD
↗ Standard Memory 640MB	↗ Roll Paper: ISO A0-A3 / 10"-60"	↗ Cut Sheets: ISO A0-A4, B0-B4 / DIN C0-C4	

FEATURES



12-COLOR LUCIA EX INK SET

Canon's LUCIA EX ink technology offers the best in photographic expression with its rich range of brilliant colors, smooth gradations, and super-fine details. Engineered for longevity, **LUCIA EX ink** have better scratch resistance and reduced bronzing than previous ink sets.

NEW MULTI-SENSOR NEW

The new large format printers have been incorporated with a new multi-sensor for improved density detection accuracy. The new multi-sensor and its included software help achieve **color consistency** across all the new iPF 12-color models

NEW CREATIVE WORKFLOW SOFTWARE SOLUTIONS* NEW

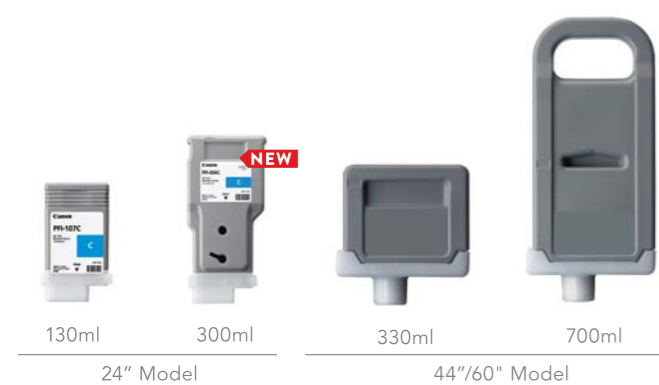
- Gallery wrap feature
- Adjustment Pattern setting feature
- Color Calibration Management Console

* Kindly refer to Software Solutions page

FASTER PRINT SPEEDS NEW

Engineered for top-notch and speedy production, all imagePROGRAF printers have improved printing speeds for a shorter print time and increased production while maintaining **high print quality**.

Printing on glossy and proofing paper has also been **optimized** for speedier output. In the [Highest] quality print mode, print speed is approximately double compared to previous models and nearly 10% faster than in other print modes.



LARGE-CAPACITY INK TANKS WITH SUB-INK TANK SYSTEM

The new 24" iPF6410 and iPF6460 models utilize **300ml ink tanks**, while the 44" iPF8410 printer and 60" iPF9410 models come with options for either 330ml or 700ml ink tanks. The new sub-ink tank system further reduces downtime for ink replacement during large volume printing without stopping the print run.



COLOR QUALITY

THE NEW 12-COLOR LARGE FORMAT PRINTERS ARE DESIGNED FOR DRAMATIC PHOTOGRAPHIC EXPRESSION AND FINELY-DETAILED COLOR REPRODUCTION FOR PROOFING NEEDS.

LUCIA EX inks are more vibrant in color, with smoother gradients, and incredibly fine details. The specially formulated ink also has better scratch resistance, **richer black reproduction**, and exceptional color stability as compared to its predecessor

More image manipulation options have been added to the bundled software, giving users better creative control in their final output. New Tint and Tone controls over four monochromatic shades allow users to create very expressive blacks with smoother gradations, especially dark areas.

For discriminating photographers who expect the final output to resemble as closely possible to their carefully crafted original image, Canon equips them with seamless **Input-to-Output** solutions. Print Plug-ins for Adobe Photoshop and Digital Photo Professional now enable 16-bit image processing to greatly improve the final output. Two advanced, one-inch print heads release a superfine 4pl ink droplet at up to a full 2400 x 1200 dpi resolution to reproduce details with superior accuracy and clarity.

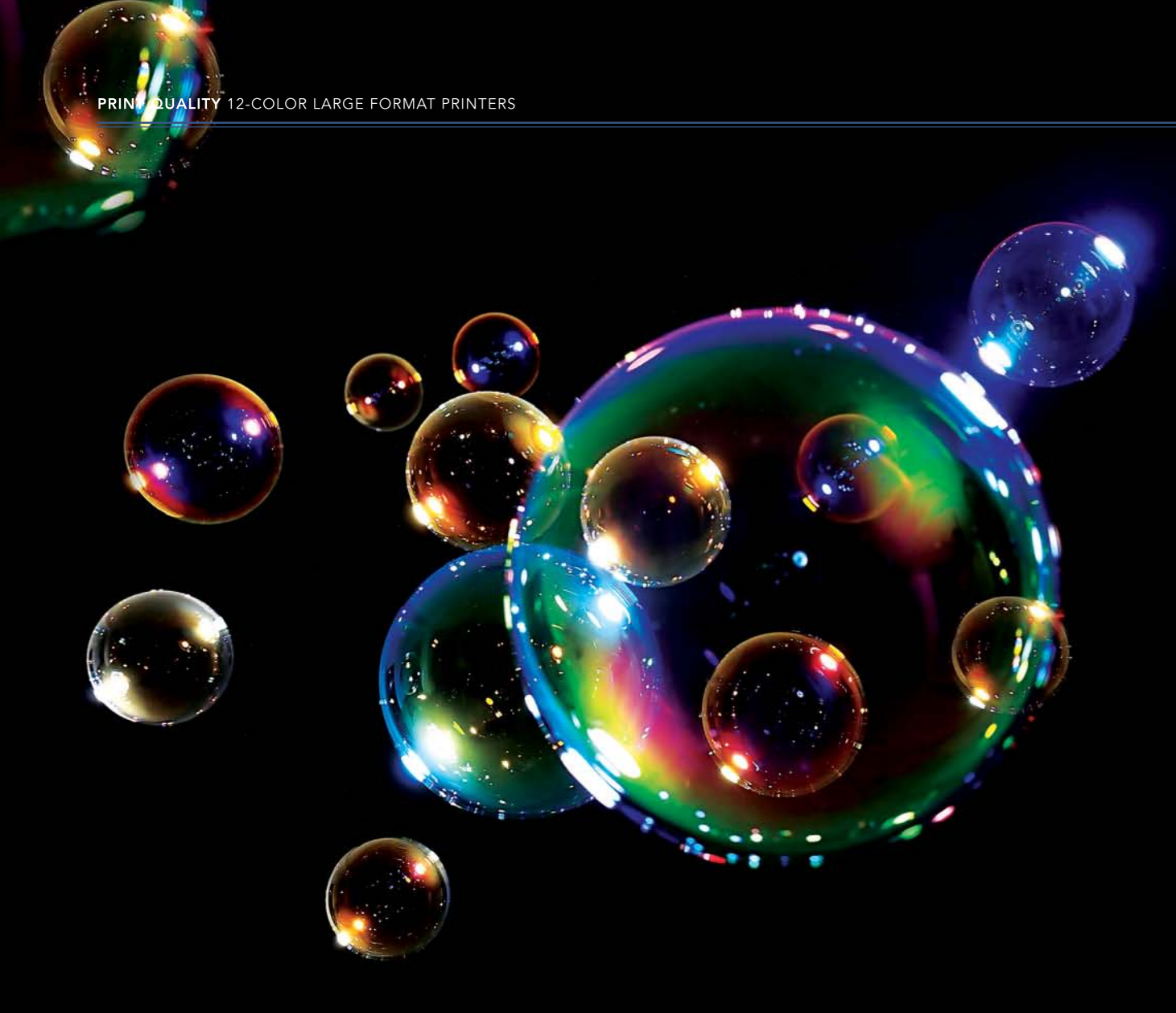
NEW ADJUSTMENT SETTINGS NEW

The Printer Driver and the Print Plug-in for Adobe Photoshop now have more new options to give users greater control over their output. The new Tone control in the **monochrome photo mode** includes adjustments for *Soft Tone*, *Middle Tone*, *Medium Hard Tone*, *Hard Tone*, and *Strong Hard Tone*. A preview is available showing how the image will be changed.

Tint control has been added to the Print Plug-in for Adobe Photoshop. This gives users the ability to affect the white space on an image to improve gloss control of a black-and-white image.



Print Plug-in



PRINT QUALITY

COLOR ACCURACY

Color Accuracy refers to the printer's ability to reproduce colors the same way in every job, and also to ensure that the color output is, in fact, the color that is required in the image. The new imagePROGRAF 12-color printers include upgraded built-in multi-sensors designed for ultra-precise **calibration and color matching**.

A few simple steps on the printer's operation panel are all that is needed for quick automatic color calibration. A single color calibration performed on one media can be applied to media in all printing modes.

COLOR CONSISTENCY

Color Consistency is the printer's ability to produce and reproduce colors without a shift or change in tone, hue, or density. Images from a printer that has been producing colors consistently will always look the same any time that image is printed on that device on the same media in the same mode. Canon includes the **multi-sensor** to help ensure color accuracy and consistency for a single printer when more than one is being used in a printing environment.



OPTIONAL FOR IPF6460 PRINTER

SU-21 SPECTROPHOTOMETER

THE NEW SU-21 SPECTROPHOTOMETER UNIT AUTOMATES COLOR MEASUREMENT AND ADJUSTMENT FOR GREATER EFFICIENCY IN CREATING PROOFS.

This optional add-on for the iPF6460 printer is easily installed simply by attaching the unit onto the front of the printer. The SU-21 Spectrophotometer Unit also fulfills printing needs with the following:

- Conforms to the **XRGA** measurement standard
- A fully automated mobile carriage for the sensor that accommodates a wide range of media width and thickness
- User-switchable **UV blocking filter** for use according to paper type
- Incorporates both a black and white backing as standard
- Ability to generate color calibration charts targets for custom or **third-party media**
- Scan speed of 10 inches per second

COLOR CALIBRATION MANAGEMENT CONSOLE

The Color Calibration Management Console (CCMC) is for the centralized management of networked printers in a system from one user-friendly software tool. This **unique** feature enables color calibration targets created using the iPF6460 printer with the optional SU-21 spectrophotometer that can be **linked** across the entire line of new 12-color imagePROGRAF devices. A printer's administrator can monitor and manage each printer. **Linking color calibration** targets among multiple printers allows color calibration for custom media to be performed on printers not equipped with a SU-21 spectrophotometer unit.



↓ X-Rite Spectrophotometer Sensor



iPF6460 Printer

INTRODUCING THE 8-COLOR LARGE FORMAT PRINTERS

EXCELLENT PRODUCTIVITY AND PERFORMANCE



44"

imagePROGRAF iPF8300S

An excellent solution for proofing, photography, and production prints, this 44" large format printer live up to high expectations with its relentless performance and high-quality imaging.

SIZE	A0	
PAPER	Plain Paper	Heavy Coated Paper
MODE	Standard	Standard
PRINT SPEED	Approx. 57sec	Approx. 1min 39sec



EASE OF USE			
Roll Paper / Cut Sheets Selection	Real-time Status of Plotter	High Capacity in Harddisk Drive	Gigabit Ethernet / USB HI Speed Connection
SPECIFICATIONS			
↗ LUCIA EX Pigment Ink ↗ 330ml / 700ml Ink Tank ↗ 160GB HDD		↗ Standard Memory 384MB ↗ Roll Paper: ISO A0-A3 / 10"-44" ↗ Cut Sheets: ISO A0-A4, B0-B4 / DIN C0-C4	



24"

imagePROGRAF iPF6300S

This 24" large format printer is extremely versatile in the most demanding printing projects, catering for advertisements and retail signage. The printer delivers exceptional results in top-notch speeds while keeping costs to a minimum.

SIZE	A1	
PAPER	Plain Paper	Heavy Coated Paper
MODE	Fast (Economy)	Fast (Economy)
PRINT SPEED	Approx. 35sec	Approx. 1min 2sec

EASE OF USE			
Roll Paper / Cut Sheets Selection	Real-time Status of Plotter	High Capacity in Harddisk Drive	Gigabit Ethernet / USB HI Speed Connection
SPECIFICATIONS			
↗ LUCIA EX Pigment Ink ↗ Max Resolution 2400 x 1200 DPI ↗ 130ml Ink Tank ↗ 160GB HDD		↗ Standard Memory 384MB ↗ Roll Paper: ISO A1-A3 / 8"-17", 24" ↗ Cut Sheets: ISO A1-A4, B2-B4 / DIN C2-C4	



60"

imagePROGRAF iPF9410S

Ideal for commercial photography, production, proofing, and retail signage, this large format printer is capable of up to 60" borderless prints in rich detail, bold colors, and minimal costs.

SIZE	A0	
PAPER	Plain Paper	Heavy Coated Paper
MODE	Fast (Economy)	Fast (Economy)
PRINT SPEED	Approx. 58sec	Approx. 1min 39sec

EASE OF USE			
Roll Paper / Cut Sheets Selection	Real-time Status of Plotter	High Capacity in Harddisk Drive	Gigabit Ethernet / USB HI Speed Connection
SPECIFICATIONS			
↗ LUCIA EX Pigment Ink ↗ Max Resolution 2400 x 1200 DPI ↗ 330ml / 700ml Ink Tank ↗ 250GB HDD		↗ Standard Memory 640MB ↗ Roll Paper: ISO A0-A3 / 10"-60" ↗ Cut Sheets: ISO A0-A4, B0-B4 / DIN C0-C4	



FEATURES



8-COLOR LUCIA EX INK SET

Canon's 8-color LUCIA EX ink system is formulated for dramatic photographic expression with a wide range of brilliant colors, smooth gradations, and incredibly fine details. The new LUCIA EX ink set also has improved scratch resistance and reduced bronzing.

HIGH SPEED PRINTS AT LOW COSTS

These 8-Color series printers come with Fast and Economy Modes for **high-speed output** that help to **lower per-print costs**, thus greatly saving on time and money resources.

→ Fast Mode Printing

The new printer drivers now offer a new print mode for quick turnaround times and low operation costs for posters, POP displays, and retail signage. In comparison to printing in Standard mode, there is an approximately 10-20% reduction of ink consumption in Fast mode.

→ Economy Mode Printing

For quick check plots, utilize the Fast Print mode with the Economy Printing option to help reduce total ink consumption by approximately 50% as compared to Standard print mode.

ACCOUNTING MANAGER

The Accounting Manager feature helps to **track and calculate printing costs** in order to minimize wastage and maximize profits.

LARGE WORKING MEMORY SPACE

The iPF6300S and iPF8300S come equipped with a spacious 160GB hard drive, while the iPF9410S has a **250GB hard drive**, to easily handle multiple complex jobs, especially in shared printer environments.

NEW MULTI-SENSOR*1 NEW

A new multi-sensor is incorporated in the large format printers for improved **density detection accuracy** over previous models.

NEW CREATIVE WORKFLOW SOFTWARE SOLUTIONS*1 NEW

- Gallery wrap feature
- Adjustment Pattern setting feature
- Color Calibration Management Console

*1 For iPF6410, iPF6460, iPF8410, iPF9410 and iPF9410S



ADVANTAGES

THE 8-COLOR LARGE FORMAT PRINTERS ALL FEATURE ADVANCED PRINTING TECHNOLOGIES THAT DELIVER CONSISTENT, HIGH-QUALITY IMAGING WHILE INCREASING OVERALL PRODUCTIVITY

HIGH-QUALITY RESULTS

Canon's **8-color LUCIA EX** is ideal for printing expressive images, thanks to its rich range of vibrant colors and subtle tones. Formulated for greater longevity, the ink set has better scratch resistance, reduced bronzing, and a 20% wide color gamut than previous ink sets.

The new large format printers also include an upgraded, built-in multi-sensor for even more precise **calibration and color matching**. Two advanced, one-inch print heads release a superfine 4pl ink droplet at up to a full 2400 x 1200 dpi resolution to reproduce details with superior accuracy and clarity.

LOW COST OF OPERATION

Fast Print Mode produces 1200 x 1200 dpi output while reducing ink consumption by 10% to 20%*2. For quick check plots, use Economy Print mode to reduce total ink consumption by approximately 50%*2 on select media.

*2 Compared to Standard Mode

MAXIMUM PRODUCTIVITY

By distributing eight colors through a 12-channel print-head, the large format printers achieve amazing print speeds for high production performance, while maintaining image quality. A **sub-ink tank system***3 allows for immediate ink replacement during large volume printing to ensure uninterrupted print runs. Thus, Canon S-Series printers are capable of producing profitable, high-quality output in less time.

*3 Not available for iPF6300S

VERSATILITY

Streamline print workflow with the Media Configuration Tool and its wide selection of media options, allowing users to input custom profiles. Ensure color consistency on profiled media with **built-in color calibration**, and create a stable printing platform for color reproduction. The **Microsoft® Office Plug-in** (PC only) and the **gallery wrap** feature lets users create and output impressive, large-format gallery wraps as well as signs and banners.

CREATIVE AND WORKFLOW SOLUTION FROM THE BOX

The imagePROGRAF printers come with innovative software that help expand the creative process as well as manage the printing process, resulting in beautiful output at a most affordable cost. **Included in 24" and 44" models only.*

PRINT PLUG-IN FOR ADOBE PHOTOSHOP

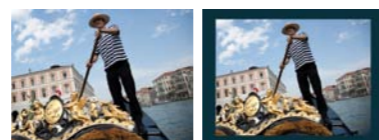
Expands creative and processing options for the photographic professional—for higher quality levels than what the traditional printer driver can offer.

→ Gallery Wrap Feature **NEW**

Users are able to easily create gallery wrap prints for framing, as well as try out other creative options.



Start Up from Adobe Photoshop



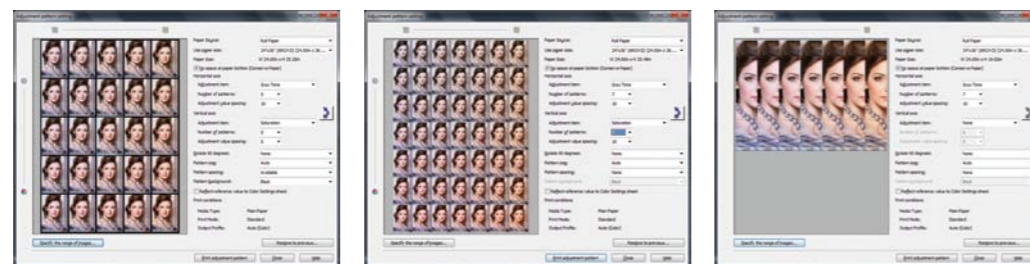
Easy to configure settings for frame thickness and image processing for the sides of the frame.



Wrap is created by stretching photo printed on canvas over wood frames so that the photo looks more substantial.

→ Adjustment Pattern Setting **NEW**

Print multiple versions of an image with different color settings before choosing the color that most closely matches the original.



Pattern 5x5

Pattern 7x7

Pattern Strip

COLOR CALIBRATION MANAGEMENT CONSOLE **NEW**

The Color Calibration Management Console program allows for the centralized management of networked printers in a system, allowing users to manage, share, and link their color data and ensuring color consistency between printers.



ACCOUNTING MANAGER*1

Allows users to track and calculate your printing costs to help minimize waste and maximize profits.

PRINT PLUG-IN FOR MICROSOFT OFFICE*1

Print posters, spreadsheets, and banners quickly and easily directly from Microsoft® Excel, PowerPoint®, and Word® applications.

PRINT PLUG-IN FOR DIGITAL PHOTO PROFESSIONAL*1

Software designed specifically for your Canon camera to help bring your professional photo production to the next level with the ability to work with RAW files.

DIRECT PRINT & SHARE SOFTWARE*1 **NEW**

Easily send multiple file formats such as PDF, JPEG, and TIFF directly to large format printers. This print job submission software enables uploading and downloading of print files by the use of cloud solution.

POSTERARTIST LITE*1

Use this template-based poster creation software to create professional posters, banners, and signage in just four easy steps!

MEDIA CONFIGURATION TOOL

Allows for new Canon and custom media profiles to be imported into the printer, giving users more flexibility in media choices.

*1 Windows platform only.

		12-COLOR			
		iPF5100 (17")	iPF6410 (24") NEW	iPF6460 (24") NEW	iPF8410 (44") NEW
INK TYPE		LUCIA Ink (Pigment-based) BK, MBK x2, C, M, Y, R, G, B, PC, PM, PGY	LUCIA EX Ink (Pigment-based) BK, MBK, C, M, Y, PC, PM, GY, PGY, R, G, B	LUCIA EX Ink (Pigment-based) BK, MBK, C, M, Y, PC, PM, GY, PGY, R, G, B	LUCIA EX Ink (Pigment-based) BK, MBK, C, M, Y, PC, PM, GY, PGY, R, G, B
INK TANK CAPACITY		130ml	130ml / 300ml	130ml / 300ml	330ml / 700ml
MAXIMUM PRINT RESOLUTION		2400 x 1200 dpi	2400 x 1200 dpi	2400 x 1200 dpi	2400 x 1200 dpi
DIMENSIONS (WxDxH)(mm), WEIGHT (kg)(Net)					
Main unit with a basket & Printer Stand		999 x 981 x 989; approx 64kg 999 x 810 x 344 mm 49kg (w/o stand)	1227 x 870 x 1001; approx 70kg	1227 x 870 x 1001; approx 70kg	1893 x 975 x 1144; approx 143kg (Include Roll Holder)
Main Unit (Pallet Included) Printer Stand		1140 x 914 x 675; approx 75kg 1115 x 864 x 237; approx 23.7kg	1370 x 928x 668; approx 88kg 1115 x 864 x 237; approx 26kg	1370 x 928x 668; approx 88kg 1115 x 864 x 237; approx 23.7kg	2080 x 1060 x 840; approx 179kg 1795 x 863 x 363; approx 43kg (incl basket)
Main unit with a basket, Printer Stand & Spectrophotometer (Optional Device for iPF6460 Only)		—	—	1227 x 970 x 1001; approx 91kg	—
POWER SUPPLY					
Input Power		AC 100-240V (50-60Hz)	AC 100-240V (50-60Hz)	AC 100-240V (50-60Hz)	AC 100-240V (50-60Hz)
Power Consumption (Active Printing)		100W or less	100W or less	100W or less	190W or less
Standby Power Consumption		6W or less	6W or less	6W or less	6W or less
Power OFF (Standby)		1W or less	0.5W or less	0.5W or less	0.5W or less
OPERATIONAL ENVIRONMENT		Temperature: 15–30°C Humidity: 10–80%	Temperature: 15–30°C Humidity: 10–80%	Temperature: 15–30°C Humidity: 10–80%	Temperature: 15–30°C Humidity: 10–80%
ACOUSTIC NOISE					
Acoustic Pressure		Operation: Approx. 51 dB (A) or less Standby: 35 dB (A) or less	Operation: Approx. 47 dB (A) or less Standby: 35 dB (A) or less	Operation: Approx. 47 dB (A) or less Standby: 35 dB (A) or less	Operation: Approx. 50 dB (A) or less Standby: 35 dB (A) or less
Acoustic Power		Operation: 6.5Bels or less	Operation: 6.4Bels or less	Operation: 6.4Bels or less	Operation: Approx. 6.8Bels or less
STANDARD MEMORY		192MB	384MB	384MB	384MB
HARD DISK		—	—	250GB	250GB
INTERFACE					
Built-In		USB 2.0 HI SPEED 10/100BASE-T/TX IEEE1394 (Option)	USB 2.0 HI SPEED 10/100/1000BASE-T/TX None	USB 2.0 HI SPEED 10/100/1000BASE-T/TX None	USB 2.0 HI SPEED 10/100/1000BASE-T/TX None
Expansion Slot					
MEDIA HANDLING					
Media Feed & Output	Roll Paper	1 Roll, Front loading, Front output	1 Roll, Top loading, Front output	1 Roll, Top loading, Front output	1 Roll, Front loading, Front output
	Cut Sheet	Manual Feed (Top/Front Loading): 1 Sheet Cassette: Front loading / 250 sheets (0.08-0.3mm Thick)	Front/Top loading: Front output Manual Feed: 1 sheet	Front/Top loading: Front output Manual Feed: 1 sheet	Front loading, Front output Manual Feed: Media locking lever
Media Thickness	Roll Paper	0.08–0.8mm	0.07–0.8mm	0.07–0.8mm	0.07–0.8mm
	Cut Sheet	Manual Feed (Top): 0.08–0.8mm Manual Feed (Front): 0.5–1.5mm	Manual Feed (Top): 0.07–0.8mm Manual Feed (Front): 0.5–1.5mm	Manual Feed (Top): 0.07–0.8mm Manual Feed (Front): 0.5–1.5mm	0.07–0.8mm
Maximum Roll Outer Diameter		150mm	150mm	150mm	150mm
Media Core Size		Internal Diameter Roll Core: 2" / 3"	Internal Diameter Roll Core: 2" / 3"	Internal Diameter Roll Core: 2" / 3"	Internal Diameter Roll Core: 2" / 3"
Media Width	Roll Paper	203.2–432mm	203.2–610mm	203.2–610mm	254–1117.6mm
	Cut Sheet	203.2–432mm	Manual Feed (Top): 203.2mm–610mm Manual Feed (Front): 250–610mm	Manual Feed (Top): 203.2mm–610mm Manual Feed (Front): 250–610mm	203.2–1117.6mm
Maximum Printable Length	Roll Paper	18m	18m	18m	18m
	Cut Sheet	Manual Feed (Top): 1.6m Manual Feed (Front): 914mm	Manual Feed (Top): 1.6m Manual Feed (Front): 914mm	Manual Feed (Top): 1.6m Manual Feed (Front): 914mm	1.6m
Printable Margins	Roll Paper	All Sides: 3mm	All Sides: 3mm	All Sides: 3mm	All Sides: 5mm
	Roll Paper (Borderless Print)	All Sides: 0mm	All Sides: 0mm	All Sides: 0mm	All Sides: 0mm
	Cut Sheet	Bottom: 23mm Others: 3mm	Bottom: 23mm Others: 3mm	Bottom: 23mm Others: 3mm	Bottom: 23mm Others: 5mm



		12-COLOR	8-COLOR		
		iPF9410 (60") NEW	iPF6300S (24")	iPF8300S (44")	iPF9410S (60") NEW
INK TYPE		LUCIA EX Ink (Pigment-based) BK, MBK, C, M, Y, PC, PM, GY, PGY, R, G, B	LUCIA EX Ink (Pigment-based) BK, MBK, C, M, Y, PC, PM, GY	LUCIA EX Ink (Pigment-based) BK, MBK, C, M, Y, PC, PM, GY	LUCIA EX Ink (Pigment-based) BK, MBK, C, M, Y, PC, PM, GY
INK TANK CAPACITY		330ml / 700ml	130ml	330ml / 700ml	330ml / 700ml
MAXIMUM PRINT RESOLUTION		2400 x 1200 dpi	2400 x 1200 dpi	2400 x 1200 dpi	2400 x 1200 dpi
DIMENSIONS (WxDxH)(mm), WEIGHT (kg)(Net)					
Main unit with a basket & Printer Stand		2299 x 766 x 1144; approx 164kg (Include Roll Holder & Media Take-up unit)	1177 x 870 x 991; approx 66kg	1893 x 975 x 1144; approx 143kg (Include Roll Holder & Basket)	2299 x 766 x 1144; approx 162kg (Include Roll Holder & Media Take-up unit)
Main Unit (Pallet Included) Printer Stand		2490 x 1060 x 1225; approx 265kg	1320 x 914 x 645; approx 79kg 1115 x 864 x 237; approx 22kg	2080 x 1060 x 867; approx 170kg 1795 x 863 x 363; approx 43kg	2490 x 1060 x 1225; approx 265kg
Main unit with a basket, Printer Stand & Spectrophotometer (Optional Device for iPF6460 Only)		—	—	—	—
POWER SUPPLY					
Input Power		AC 100-240V (50-60Hz)	AC 100-240V (50-60Hz)	AC 100-240V (50-60Hz)	AC 100-240V (50-60Hz)
Power Consumption (Active Printing)		190W or less	190W or less	190W or less	190W or less
Standby Power Consumption		6W or less	7W or less	6W or less	6W or less
Power OFF (Standby)		0.5W or less	1W or less	1W or less	0.5W or less
OPERATIONAL ENVIRONMENT		Temperature: 15–30°C Humidity: 10–80%	Temperature: 15–30°C Humidity: 10–80%	Temperature: 15–30°C Humidity: 10–80%	Temperature: 15–30°C Humidity: 10–80%
ACOUSTIC NOISE					
Acoustic Pressure		Operation: Approx. 52 dB (A) or less Standby: 35 dB (A) or less	Operation: Approx. 47 dB (A) or less Standby: 35 dB (A) or less	Operation: Approx. 50 dB (A) or less Standby: 35 dB (A) or less	Operation: Approx. 52 dB (A) or less Standby: 35 dB (A) or less
Acoustic Power		Operation: Approx. 6.8Bels or less	Operation: 6.4Bels or less	Operation: Approx. 6.8Bels or less	Operation: Approx. 6.8Bels or less
STANDARD MEMORY		640MB	384MB	384MB	640MB
HARD DISK		250GB	160GB	160GB	250GB
INTERFACE					
Built-In		USB 2.0 HI SPEED 10/100/1000BASE-T/TX None	USB 2.0 HI SPEED 10/100/1000BASE-T/TX None	USB 2.0 HI SPEED 10/100/1000BASE-T/TX None	USB 2.0 HI SPEED 10/100/1000BASE-T/TX None
Expansion Slot					
MEDIA HANDLING					
Media Feed & Output	Roll Paper	1 Roll, Front loading, Front output	1 Roll, Top loading, Front output	1 Roll, Front loading, Front output	1 Roll, Front loading, Front output
	Cut Sheet	Front loading, Front output Manual Feed: Media locking lever	Front/Top loading: Front output Manual Feed: 1 sheet	Front loading, Front output Manual Feed: Media locking lever	Front loading, Front output Manual Feed: Media locking lever
Media Thickness	Roll Paper	0.07–0.8mm	0.07–0.8mm	0.07–0.8mm	0.07–0.8mm
	Cut Sheet	0.07–0.8mm	Manual Feed (Top): 0.07–0.8mm Manual Feed (Front): 0.5–1.5mm	0.07–0.8mm	0.07–0.8mm
Maximum Roll Outer Diameter		150mm	150mm	150mm	150mm
Media Core Size		Internal Diameter Roll Core: 2" / 3"	Internal Diameter Roll Core: 2" / 3"	Internal Diameter Roll Core: 2" / 3"	Internal Diameter Roll Core: 2" / 3"
Media Width	Roll Paper	254–1524mm	203.2–610mm	254–1118mm	254–1524mm
	Cut Sheet	203.2–1524mm	Manual Feed (Top): 203.2mm–610mm Manual Feed (Front): 250–610mm	203.2–1118mm	203.2–1524mm
Maximum Printable Length	Roll Paper	18m	18m	18m	18m
	Cut Sheet	1.6m	Manual Feed (Top): 1.6m Manual Feed (Front): 914mm	1.6m	1.6m
Printable Margins	Roll Paper	All Sides: 5mm	All Sides: 3mm	All Sides: 5mm	All Sides: 5mm
	Roll Paper (Borderless Print)	All Sides: 0mm	All Sides: 0mm	All Sides: 0mm	All Sides: 0mm
	Cut Sheet	Bottom: 23mm Others: 5mm	Bottom: 23mm Others: 3mm	Bottom: 23mm Others: 5mm	Bottom: 23mm Others: 5mm





Delighting You Always

SOUTH & SOUTHEAST ASIA REGIONAL HEADQUARTERS

CANON SINGAPORE PTE. LTD.

1 HarbourFront Avenue #04-01 Keppel Bay Tower, Singapore 098632
Tel: 65-6799-8888 | Fax: 65-6799-8882

www.canon-asia.com
www.canon.com.sg

CANON SALES SUBSIDIARIES & BUSINESS PARTNERS

BANGLADESH

J.A.N. Associates Ltd
House 25, Road 5
Dhamondi R/A
Dhaka-1205, Bangladesh
Tel : 880-2-8611444
Fax : 880-2-8610410

INDIA

Canon India Pvt. Ltd
7th Floor, Tower B
DLF Cyber Terraces
DLF Phase-3
Gurgaon — 122002 Haryana, India
Tel : 91-124-4160000
Fax : 91-124-4160011

MYANMAR

Myanmar Golden Rock
International Co., Ltd.
Level 6, FJV Commercial Center
No: 422-426, Strand Road
Botataung Township
Yangon, Myanmar
Tel : 95-1-202092 to 96
Fax : 95-1-202079

SRI LANKA

Metropolitan Computers (Pvt.) Ltd
85, Braybrook Place
Colombo 2
Sri Lanka
Tel : 94-11-2437797
Fax : 94-11-2448980

BRUNEI

Interhouse Company
No. 5-7 Bunut Jaya Complex
Spg 574 Jalan Tutong BF1320
P.O. Box 423, Seri Complex
Bandar Seri Begawan BA 1779
Brunei Darussalam
Tel : 673-2-653001
Fax : 673-2-653003

INDONESIA

PT Datascrip
Kawasan Niaga Selatan Blok B-15
Bandar Kemayoran, Jakarta 10610
Indonesia
Tel : 62-21-6544515
Fax : 62-21-6544811 to 13

NEPAL

International Electronics
Concern (P) Ltd
Kha 14, 1st Floor
Haratibhawan Putalisadak
Ramshah Path, Kathmandu
Nepal P.O. Box 12588
Tel : 977-1-4421991
Fax : 977-1-4421909

THAILAND

Canon Marketing (Thailand) Co., Ltd.
No.98 Sathorn Square Office Tower
21st to 24th Floor, North Sathorn Road
Silom, Bangrak, Bangkok 10500
Tel : 66-2-3449988
Fax : 66-2-3449861

CAMBODIA

Royal Cambodia Co., Ltd
#437 Preah Monivong Blvd
Phnom Penh
Kingdom of Cambodia
Tel : 855-23-428955
Fax : 855-23-722961

MALAYSIA

Canon Marketing
(Malaysia) Sdn. Bhd.
Block D, Peremba Square
Saujana Resort Section U2
40150 Shah Alam
Selangor Darul Ehsan, Malaysia
Tel : 60-3-78446000 / 78450055
Fax : 60-3-78446196 / 6198

PAKISTAN

Shirazi Trading Company (Pvt.) Ltd
8th Floor, Adamjee House
I.I. Chundrigar Road
Karachi 74000 Pakistan
Tel : 92-21-3241 (7659), (7737) or (7746)
Fax : 92-21-(32417747), (32420417)
or (32420418)

VIETNAM

Canon Marketing Vietnam Company Ltd.
Unit 6, 6th Floor, Saigon Centre
65 Le Loi, District 1, Ho Chi Minh City
Vietnam
Tel : (84-8) 38200 466
Fax : (84-8) 38200 477

HONG KONG

Canon Hongkong Co.Ltd
19F, The Metropolis Tower
10 Metropolis Drive
Hungom, Hong Kong
Tel : 825-3191-2388
Fax : 825-2369-3800

MALDIVES

SIMDI Company Pvt. Ltd.
G. Faith, Majeedhee Magu
Male' 20-129
Republic of Maldives
Tel : 960-3334421
Fax : 960-3334424

PHILIPPINES

Canon Marketing (Philippines), Inc.
Ground Floor Commerce and Industry Plaza
Campus Ave. Cor. Park Ave., McKinley Hill
Fort Bonifacio, Taguig City
Tel : 632-884-9000
Fax : 632-556-1456

This document is for information purpose only and the contents are subject to change without notice. Product options, name and availability may vary by regions. Nothing in this document should be construed as a warranty. We expressly disclaim any liability or contractual obligations with respect to this document.

Option names and availability may vary by region. PostScript and PostScript3 are trademarks of Adobe Systems Incorporated, registered in certain jurisdictions. Microsoft and Windows are registered trademarks of Microsoft Corporation in the United States and other countries. Other names may be trademarks of their respective owners.