

EOS

Canon

Delighting You Always



EOS
R7

RAPTOR

I N S T I N C T T A K E S U S C L O S E R

32.5 MEGA
PIXELS
CMOS

ISO
32000

Vari angle LCD

Animal Priority
AF

Up to
30
Frames
Per Sec

IN-BODY
IMAGE
STABILIZER

A P S - C

M I R R O R L E S S

CONTENT

01

IMAGE
QUALITY >

02

IMAGE
STABILISATION >

03

DRIVE &
AUTOFOCUS >

04

MOVIE
SHOOTING >

05

OPERABILITY >

06

NETWORK &
CONNECTIVITY >

07

KIT LENS >

08

SPECIFICATIONS >



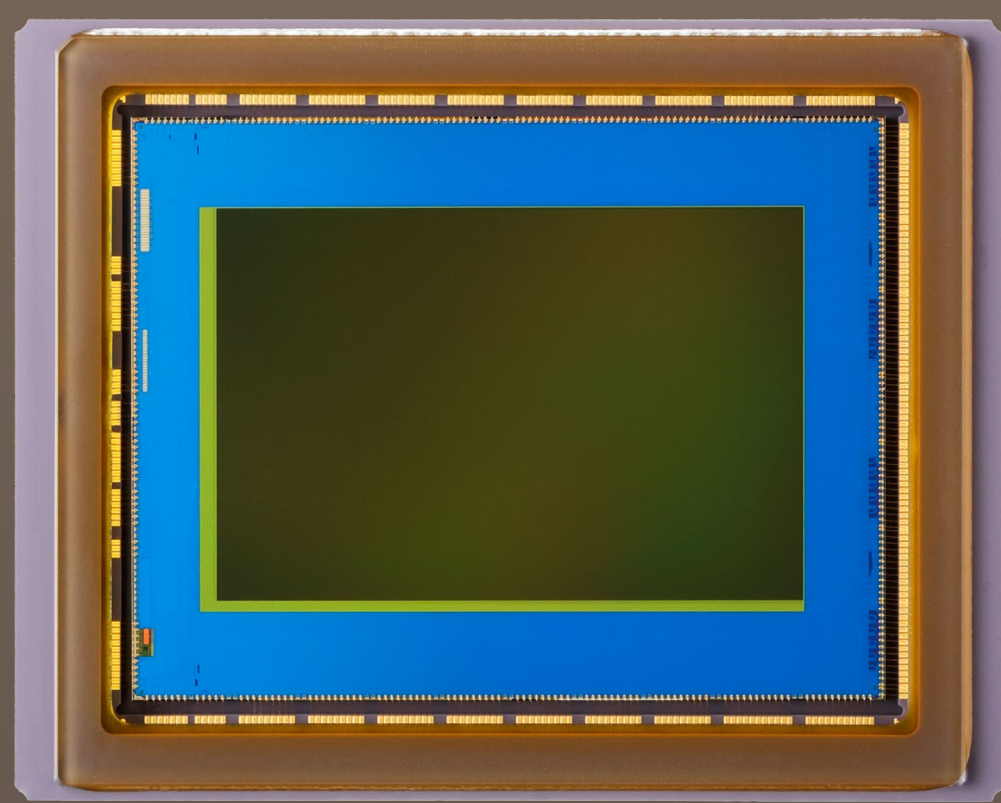
IMAGE QUALITY

01

Approx. 32.5-Megapixel APS-C CMOS Sensor

32.5 MEGA
PIXELS
CMOS

The newly developed EOS R7 APS-C CMOS sensor offers a high resolution of approx. 32.5 effective megapixels. A benefit of the APS-C size is its crop factor that creates a telephoto effect while maintaining the high pixel count. For wildlife and bird photography, this means an extension of your lens focal length by 1.6x, giving you additional reach for close-up shots. Moreover, image quality is perfected with enhanced sensitivity, smoothly capturing all the natural textures of wildlife.



DIGIC X Processor

The EOS R7 is powered by the DIGIC X image processor and is able to calculate incredible amounts of information, creating a powerful balance of speed and precision for stellar camera performance.

DIGIC
X



HDR PQ & 3-Shot Composite HDR Mode

Shoot in life-like brilliance, captured by the EOS R7. The HDR mode of the EOS R7 allows the camera to express a wider range of brightness even in bright areas of the photograph, and with HDR shooting, the EOS R7 shoots images in HEIF that are converted into JPEG in-camera to produce realistic still images with higher dynamic range.



The HDR mode also introduces the 3-shot composite mode, that can capture rich gradations in bright and dark areas by consecutively taking three JPEGs or HEIFs at different exposures, then combining them.

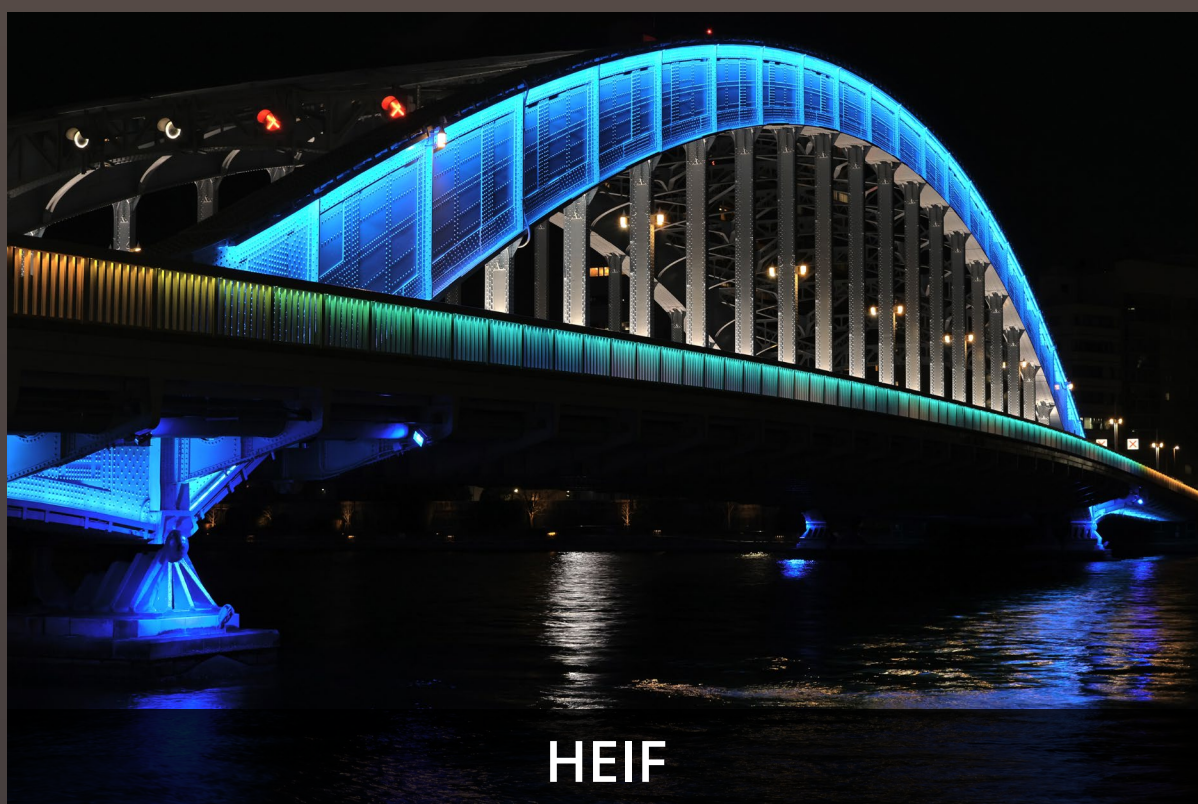


IMAGE STABILISATION

02

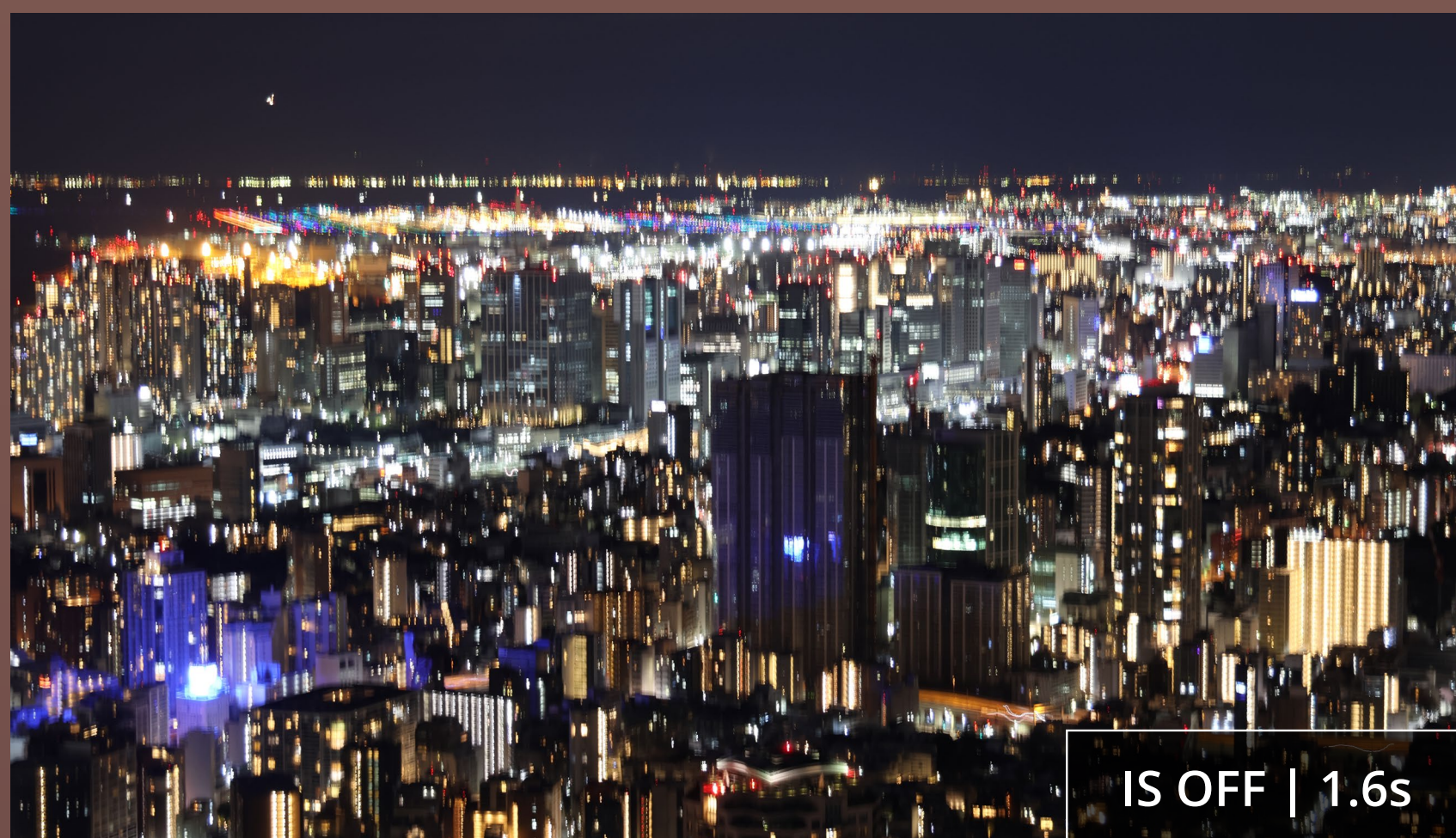
In-Body Image Stabilisation

The EOS R7 is the first APS-C among the EOS lineup to feature an In-Body Image Stabilizer (IBIS). The EOS R7 can achieve up to 8 stops of image stabilisation (IS) when paired with a compatible RF lens that has optical IS, making the EOS R7 a fantastic camera for handheld and outdoor photography.

IN-BODY
IMAGE
STABILIZER



OPTICAL
IMAGE
STABILIZER



Auto Leveling

Packed with innovative technology, the EOS R7 features the Auto Leveling function. Using the roll correction of the in-body image stabilisation, it automatically adjusts minor tilt orientation of an image to make it accurately horizontal.* This brilliant function supports both still picture and movie. It can be used in both landscape and portrait photography with a wide correction range, improving shooting efficiency to a high degree.



*Cannot be use under the following conditions:

1. Shutter method : Electronic First Curtain
2. Drive : High-speed continuous shooting
3. Panorama/Panning/Kid/Sports mode
4. Time-lapse movie

Scene Mode

The EOS R7 features both Panorama Shot and Panning Mode within Scene Mode (SCN).



Panorama Shot mode corrects image distortion caused by camera shake during panorama shooting. Previously difficult-to-capture shots, even with a wide-angle lens, can be photographed as a high-quality panoramic image with rich gradations.



Panning Mode is especially useful for motorsport photographers. Subject detection data produced during tracking is used to enhance clarity of panning shots. The camera controls the image stabilisation system when detecting subject blur to ensure that the subject is focused while maintaining the smooth background flow.

DRIVE & AUTOFOCUS

03

High-Speed Continuous Shooting: Mechanical & Electronic Shutter

The EOS R7 camera shutters – electronic and mechanical – were developed to keep up with the incredibly quick movements of birds and wildlife. With a high-speed burst shooting speed of up to 15 fps, the EOS R7's mechanical shutter is the fastest in the EOS R series and APS-C EOS cameras yet. Additionally, the electronic shutter can achieve up to 30 fps continuous shooting with a RAW burst mode.

Upto
15

Frames
Per Sec

Upto
30

Frames
Per Sec



Pre-Shoot Function (RAW Burst Mode)

A handy pre-shoot function helps you capture every second of the action. Especially useful for critical moments, the EOS R7 RAW burst mode starts capturing the shots 0.5 seconds even before the first shutter release. Even at high speed, every shot, including RAW images shots at 30 fps, are captured in high definition at a resolution of approx. 32.5 megapixels.

EOS iTR AF X

Inheriting the EOS R3's unparalleled tracking system, the EOS R7 also features the EOS iTR AF X (Intelligent Tracking and Recognition Autofocus) and three high performance subject detection modes – People, Animal and Vehicle Priority. When the EOS R7 detects a subject on-screen, it determines the movement characteristics and tracking potential, allowing it to perform optimum tracking that is reliable and stable even if the position of the subject changes.



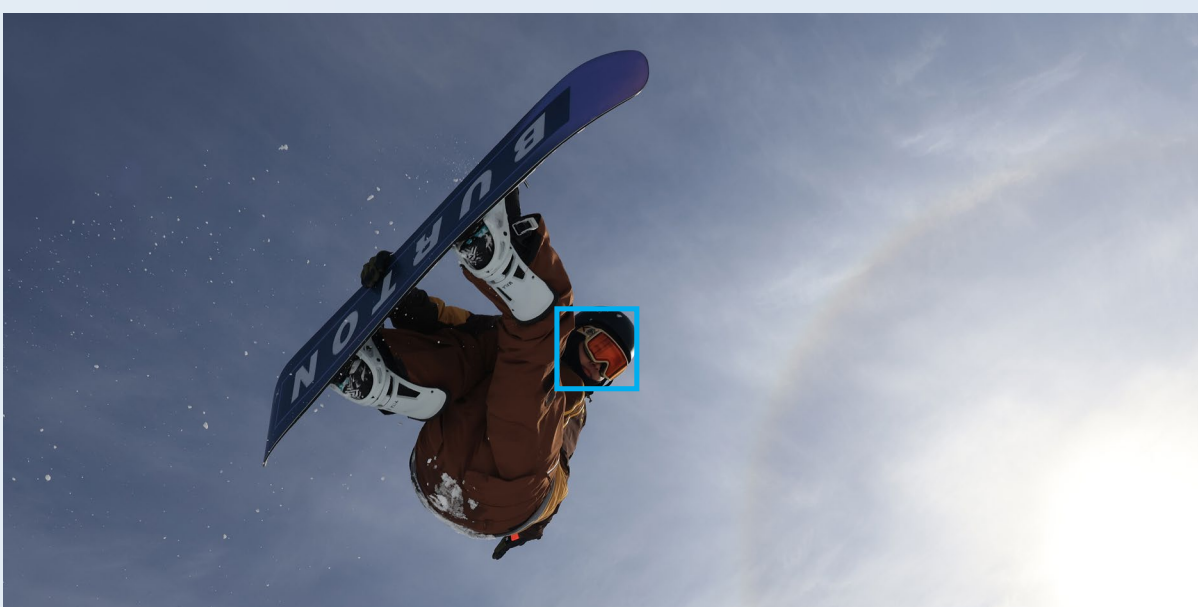
People Priority
AF



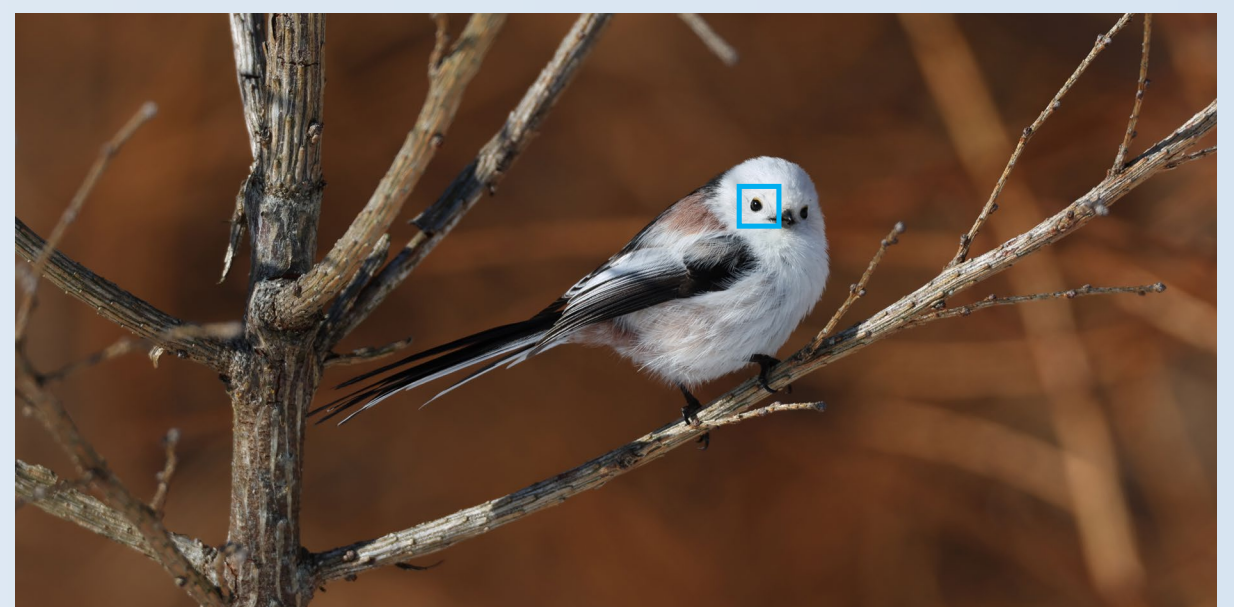
Animal Priority
AF



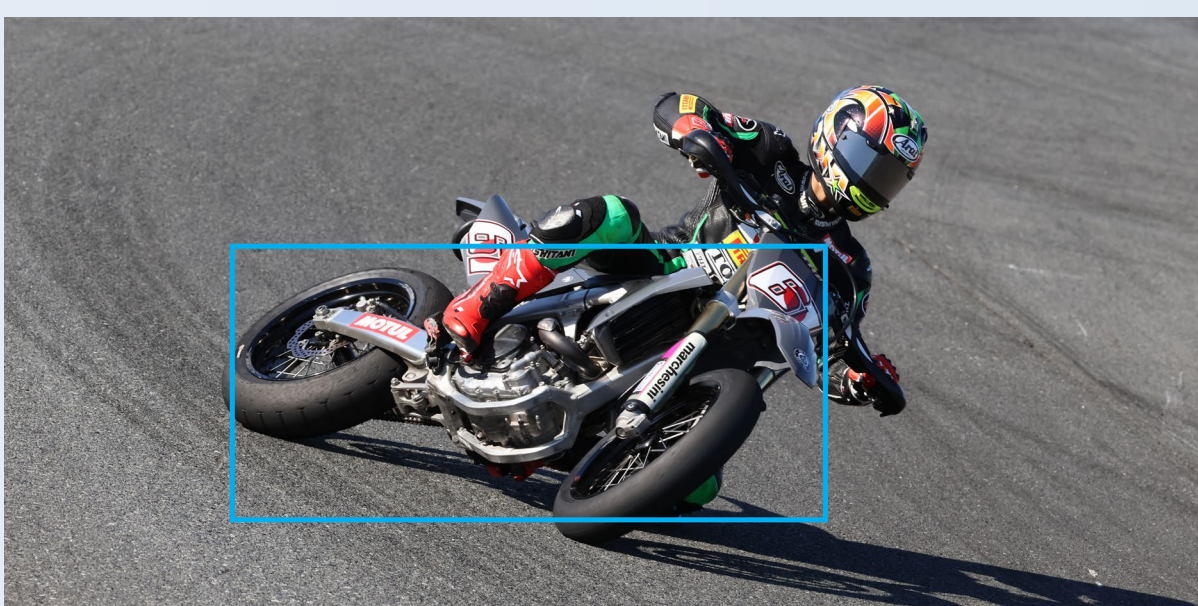
Vehicle Priority
AF



People Priority AF



Animal Priority AF



Vehicle Priority AF

Dual Pixel CMOS AF II

Dual Pixel
CMOS **AF II**

The EOS R7's exemplary autofocus performance is defined by its wide coverage and precise AF points of up to 651 zones. When a subject is detected, AF tracking expands to function over the entire visible image area (approx. 100% x 100%)* to deliver peak performance when shooting.

When no subject is detected:
Up to 90% x 100% (approx.)



When subject is detected:
Up to 100% x 100% (approx.)

* For details on supported lenses, refer to Supplementary Information of EOS R7 on cam.start.canon

MOVIE SHOOTING

04

4K UHD

The EOS R7 features improved 4K UHD Fine/4K UHD and 4K UHD crop to fit new and existing types of movie shooting needs.



Recorded at 3840 x 2160 pixels, the 4K UHD Fine 30p footage provides a higher quality of video recording by adopting a 7K oversampling processing, delivering excellent resolution and colour reproduction suitable for large screen viewing.

4K UHD is perfect for the occasional enthusiast. It records a full field of view at 60p frame rate, with the resultant recording adaptable for a wide range of purposes.

In addition to the telephoto effect of 1.6x provided by the unique performance advantage of APS-C sensor, the EOS R7 further increases this effect by 1.8x when shooting in 4K UHD Crop, thus giving the footage shot on a 400mm lens the angle of view that is equivalent to a 1150mm lens (approx.).

Canon Log 3 & Diverse Shooting Support

The EOS R7 supports 8-bit (normal shooting) and 10-bit (HDR PQ) recording as well as Canon Log 3, which is widely used in the Cinema EOS System. Canon Log 3 is less prone to blownout highlights than Canon Log, can express tones even in high contrast scenes, and is suitable for HDR movie footage. With three different recording options, the EOS R7 is a versatile camera for a multitude of shooting purposes.



Movie Recording Mode

Enjoy effortless HDR PQ movie shooting capability that offers output that can be utilised immediately, easing the post-production workflow. Canon Log 3 data can be edited into HDR materials and used conveniently for different outputs, providing an extended range of imaging expression.

High Frame Rate 120p Full HD

Create epic scenes with the EOS R7's slow-motion effect. When operating at Full HD, the EOS R7 allows you to shoot movies at 120p. During editing or playback, the frame rate becomes 25p, allowing the camera to achieve a dramatic slow-motion effect that is approx. 4 times slower.

OPERABILITY

05

Electronic Viewfinder

See the world around you in glorious definition and beautiful colour through the EOS R7's approx. 2.36 million-dot resolution OLED electronic viewfinder (EVF). The approx. 1.15x magnification allows for a spacious field of view closer to 35mm full-frame EOS cameras, a step up from conventional APS-C cameras.

Utilising innovative HDR image processing technology and automatic brightness setting, the optical viewfinder (OVF) simulation view assist feature of the EOS R7 reproduces a natural image view when looking through the viewfinder by suppressing black crush and blown highlights, mimicking a true SLR viewfinder experience for greater comfort and photographic satisfaction.

Electronic Viewfinder





Vari angle LCD

Vari-angle Touchscreen LCD

The Vari-angle Touchscreen LCD is a versatile feature that greatly enhances any workflow by enabling quick control and flexible shooting in both horizontal and vertical orientation. Its approx. 1.62 million-dot resolution ensures a faithful reproduction of shooting scenes.

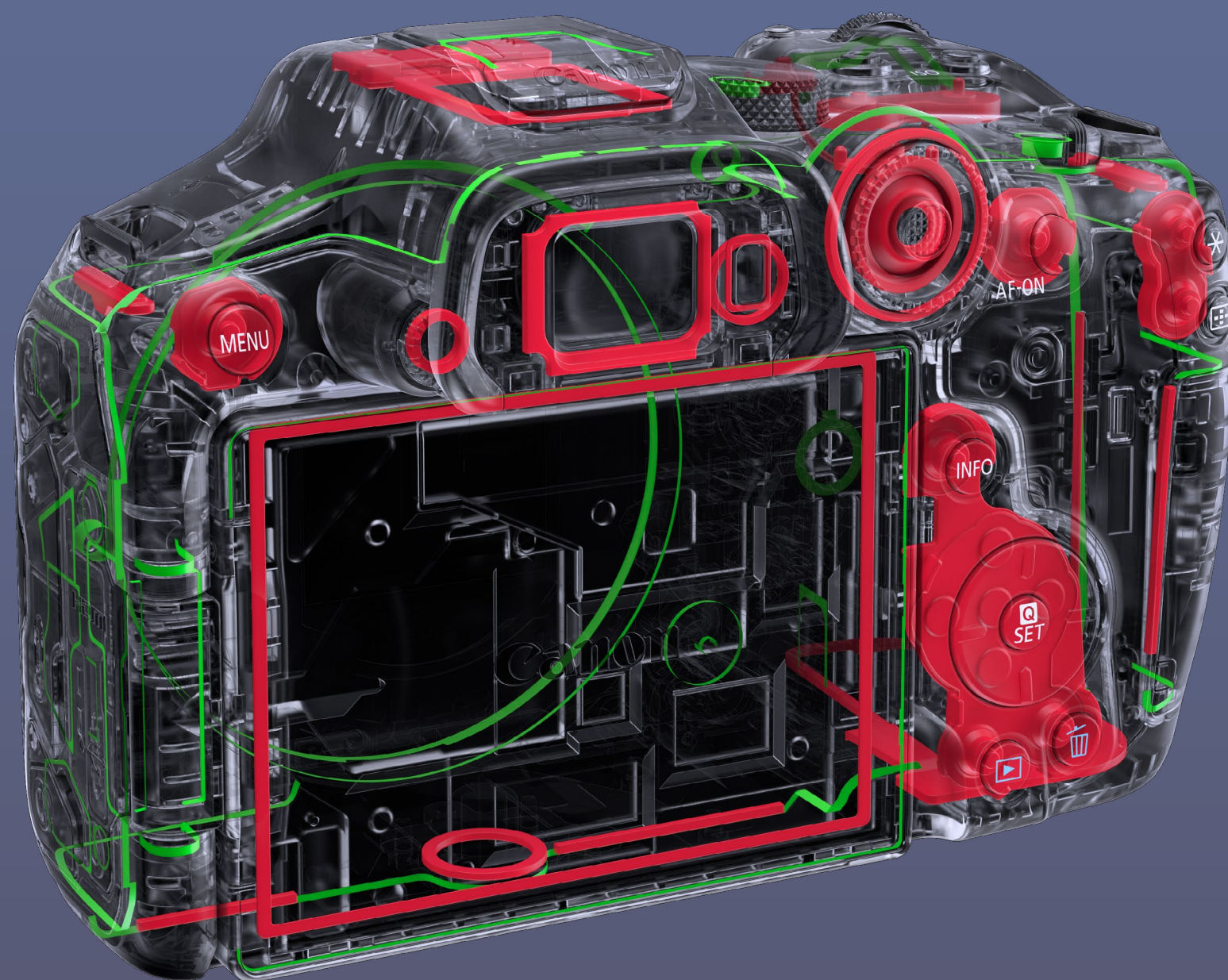
New Quick Control Dial

An innovative new quick control dial with the functions of a multi-controller offers easy access to buttons while keeping your eye on the viewfinder. Placed in a convenient-to-reach position on the EOS R7 body, you can smoothly change exposure settings, operate playback, or switch focus.



Weather Sealing

The EOS R7 is built to last. Designed for durability, it resists environmental damage, making it the perfect outdoor companion. A strong sealant is incorporated into the battery compartment and around operation buttons, preventing dust and moisture from damaging the camera. The chassis uses a magnesium alloy with high-impact resistance, electromagnetic shielding effect, and allows for excellent heat conductivity.



— Sealing parts — High-precision parts



Dual Card Slots

Within its compact and lightweight body, the EOS R7 is equipped with dual card slots. Two UHS-II compatible SD cards allow for flexible recording methods per your preference and workflow needs.

Multi-Function Shoe

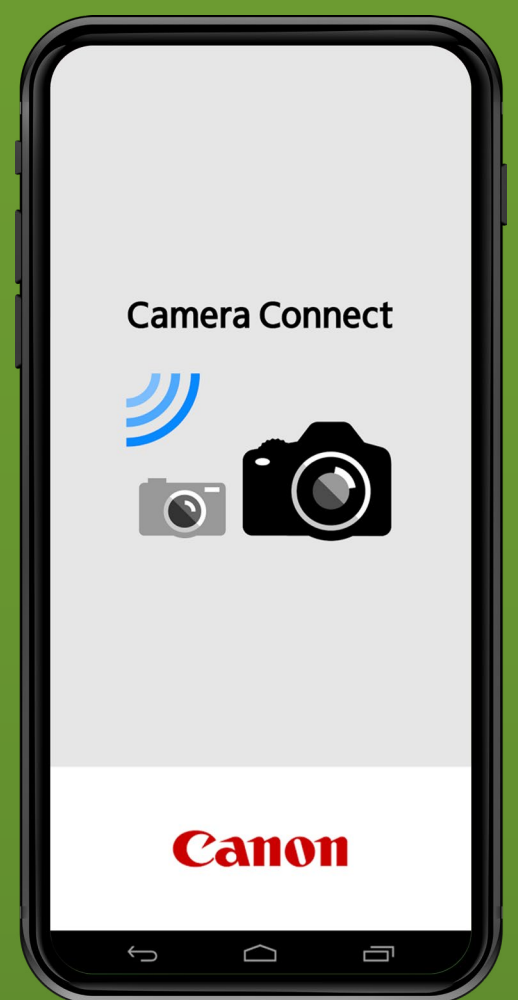
For added functionality and broader versatility, the EOS R7 is equipped with the next generation Multi-Function Shoe that expands its stills and movie potential. The future-proof interface opens endless possibilities; from network communication, sound-recording to smartphone pairing and movie shooting.



NETWORK & CONNECTIVITY 06

2.4GHz Wireless LAN, USB & Bluetooth Support

The EOS R7 has wireless and wired connectivity options to support a variety of data transfer needs. It supports 2.4GHz wireless LAN and Bluetooth 4.2, allowing you to quickly transfer images to external devices and enabling remote control of the camera using the Camera Connect app or wireless controllers. The EOS R7 also supports Wi-Fi Protected Access 3 (WPA3), ensuring personal data protection that conforms to the latest security standards.



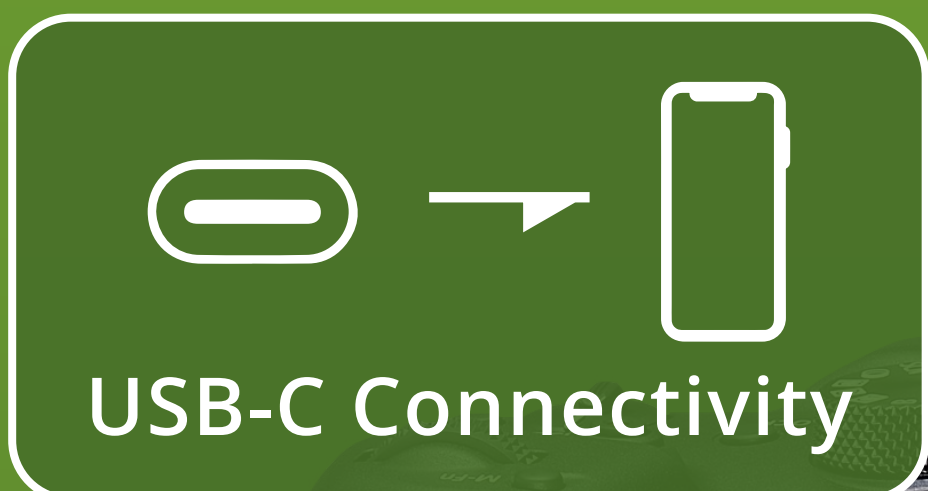
Wireless/Wired Smartphone Communication

With the Camera Connect app (iOS/Android), you can control the camera, shoot pictures remotely as well as transfer images to the smartphone via wireless connections. Additionally, the app now supports wired (USB) connection.

Using the Multi-Function Shoe Adapter for Smartphone Link AD-P1 accessory, you can enjoy stable and fast communication between the camera and smartphone (Android only) via a wired connection.



Multi-Function
Shoe Adapter for
Smartphone Link AD-P1



KIT LENS

07

RF-S
Lenses

RF-S18-150mm f/3.5-6.3 IS STM

The RF-S18-150mm f/3.5-6.3 IS STM is a lightweight and compact high-magnification zoom lens that can cover an expansive range of 8.3x (approx.) from wide angle to telephoto. It is also flexible for use in close-up to macro photography with the shortest shooting distance being approx. 0.17m¹ and the maximum shooting magnification being approx. 0.44x². The lens also features effective image stabilisation (IS) of up to 4.5 stops³, and up to 7 stops when combined with the EOS R7's in-body IS. In all, it is a versatile lens that is suitable for amateurs and advanced enthusiasts.



¹ at 18-35mm range

² at 50mm focal length

³ at 150mm focal length

SPECIFICATIONS

08

Type		EOS R7
Lens mount		RF mount
Compatible Lenses		RF lens (EF/EF-S lens with EF-EOS R adapter)
Imaging sensor	Sensor size	APS-C
	Number of effective pixels (Approx.)	32.5 million
Imaging processor		DIGIC X
Card slot		Dual SD Card slots (UHS-II compatible)
Still	Image format	JPEG / HEIF / RAW / C-RAW
	MP4 recording	Available
Movie	Movie recording size	4K UHD Fine (30p) / 4K UHD (60p) / 4K UHD crop (60p) / Full HD
	Canon Log 3	Available
	HDR PQ	Available
	Maximum durations of shooting (Normal recording, Max.)	6 hours
AF*1	AF area (AF method)	Spot AF / 1 point AF / Expand AF area (Above, below, left and right) / Expand AF area (Around) / Flexible zone AF 1-3 / Whole area AF
	Number of AF zones available for Automatic Selection (Max., Zone)	651
	Subject tracking	Whole area AF mode
	Subject to detect	People / Animal / Vehicles
Viewfinder	Type	Electronic (EVF)
	Dot count	Approx. 2.36 million dots
	Coverage	Approx. 100%
	Magnification	Approx. 1.15 x

SPECIFICATIONS

08

Type	EOS R7	
LCD monitor	Dot count	Approx. 1.62 million dots
	Size	3.0-inch
	Angle adjustment	Vari-angle design
Exposure control	ISO speed (Still)	100-32000, H:51200
	ISO speed (Standard movie)	100-12800, H:25600
	HEIF (HDR PQ)	Available
Shutter speed		1/8000 sec (Mechanical / Electronic 1st curtain), 1/16000 sec (Electronic shutter)
Image stabilization	Optical Lens IS support	Yes
	In-body IS	Yes
	Coordinated Control IS	Yes
	IS stop (Still: Yaw / Pitch, CIPA standard)	Max. 8 stops with RF24-105mm f/4L IS USM, f=105mm
Drive		Max. approx. 15 fps (Mechanical / Electronic 1st curtain shutter), Max. approx. 30 fps (Electronic shutter)
Built-in flash		Not available
Dust and drip resistance		Yes
Dimensions and Weight	Dimensions (CIPA standard)	Approx. 132.0 x 90.4 x 91.7 mm
	Weight (body, including battery and SD card; CIPA standard)	Approx. 612 g

EOS R7

Find out more:

EOS R7

Canon

Delighting You Always



CANON IMAGING ASIA



CANON ASIA



@CANONASIA

SNAPSHOT

SNAPSHOT.CANON-ASIA.COM

DISCLAIMERS

This document is for information only and the contents are subject to change without notice. Errors and omissions excepted. Images are simulated. Weight and dimensions are approximates. Nothing in this document should be construed as a warranty. Product/ Service options, name and availability may vary by region. We expressly disclaim any liability or contractual obligations with respect to this document. Canon and EOS among others are trademarks of Canon Inc. and/or its affiliates. Other names, marks and logos contained in this document may be the registered trademarks or trademarks of their respective owners.